



Village

Arrival Information



Welcome

We are looking forward to welcoming you to Burgmann Village.

Please note your room will be available from 2pm **on Wednesday 21st January 2026.**

We have included a short checklist of suggested items for you to bring to help you prepare, at the end of this document. If you have a self-catered package, you can join our community for a complimentary dinner on Tuesdays, Thursdays and Sundays.

Welcome Video and New Resident Information

All new residents are encouraged to watch our welcome video which provides an overview of the College. We also have new resident information here [New Resident Information 2026 | Burgmann College](#)

[CLICK HERE TO WATCH](#)

Arrival & Parking

Upon arrival, please come to our reception to check in and receive your room access card. You will need to keep your access card with you at all times.

Parking at Burgmann College is very limited and drop off only is advised for all residents when first arriving. Should you need to park long term, consider parking across Sullivan's Creek in the large parking area that is managed by ANU. For more ANU parking information, please click [here](#).

Your Room

We have made every effort to have your room ready for you. Please fill out your room checklist where you can indicate any issues with your room upon arrival. **Please return this checklist to reception within seven (7) days of your arrival. The checklist is here: [Village Check List](#)**



It is important that you read our Burgmann College Electrical Safety Guidelines included at the end of this information pack noting:

- The use of travel adaptors and multi-plug devices in a resident's room or anywhere in Burgmann College is permitted only when the adaptor or device is made to Australian Standards and purchased in Australia. It is prohibited to use items that do not meet these Standards or are purchased outside of Australia.
- Double adaptors are not permitted onsite. Only power-boards with surge protection, purchased in Australia and meeting Australian Standards may be used.

For information on what electrical devices are allowed in accommodation at our college, please refer to the table on the last page of our Burgmann College Electrical Safety Guidelines.

Bar fridge policy and procedure

Residents are permitted to have a bar fridge in their room for the duration of their residential contract on the following conditions:

1. If the fridge is second-hand or not under warranty, it must be tested and tagged by our Maintenance department. This can be done by logging a maintenance job on The Hub (via Burgmann website).
2. Fridges must be kept clean and hygienic throughout the residential contract.
3. Residents are responsible for the removal of the fridge at the end of contract. Failure to do so will result in a \$250 disposal fee charge.
4. Returning residents may leave their bar fridge at the College over the summer break in line with departure information procedures provided by the College near the end of semester 2.

Dining Hall

The Dining Hall is located on the ground floor at the front of the College.

Mealtimes areas follows:

Continental Breakfast:	Monday to Sunday	6.30am – 10.00am
Hot Breakfast:	Monday to Friday only	7.00am – 9.30am
Lunch:	Everyday Everyday	12.30pm – 1.30pm
Dinner:		5.30pm – 6.45pm

If you have a self or flexi-catered package, you will be issued with a unique 6 digit pin for meals. Please input this pin when you arrive at the servery each time you take a meal. Your pin number is for you only and should never be shared with anyone. A self-catered meal plan offers three dinners per week on the following days: Tuesday, Thursday, Sunday. A flexi-catered meal plan offers two meals per day/14 meals per week. If the two-meal option is not utilised in the same day, they do not accrue for bulk use later.

The Hub

Burgmann Residents have access to a current resident portal called The Hub. The Hub is accessed from the Burgmann College Website.



- New residents will be emailed access instructions to The Hub upon arrival.
- The Hub is used by current residents as an online resource for logging maintenance and housekeeping jobs for accommodation, IT help, accessing support, booking rooms as well as ordering takeaway meals.

BURGMANN WEBSITE

Internet & WiFi

The ANU wireless network is available throughout Burgmann College.

To connect:

1. Find the network: ANU-Secure
2. Log in with your ANU number and ANU password
3. For more information, visit this [page](#).

Emergency Contacts (After Hours)

- All RAs are trained in first aid
- Call them **after hours** if:
 - You've had to call emergency or ANU Security
 - You need first aid
 - You are locked out of your room
 - You have a serious issue or concern needing immediate help

For all other Burgmann related support, please call Reception during office hours.

Burgmann Reception (Monday – Friday, 8.30am – 5.00pm): **6125 6100**

Emergency (Police, Fire, Ambulance): **000**

ANU Security (available 24/7): **6125 2249**

ANUOK App

ANUOK is the official safety and wellbeing app for the ANU community.

The app features include quick access to security, emergency information and current alerts, COVID updates, safety tools, a campus map and other personal support resources.

All students are advised to download this app. Please ensure push notifications are turned on so that you can stay informed about what's happening at ANU.

Download ANUOK on Google Play [here](#)

Download ANUOK on the App Store [here](#)

Smoking

Burgmann College and the ANU campus is a smoke - free zone and smoking is not permitted inside buildings or on any exterior grounds except for the Designated Outdoor Smoking Area (DOSA); this



includes e-cigarettes and vapes. Smoking is only permitted at the DOSA location, which is behind the Maintenance office. See the Burgmann College map included in this document.

Prepare for ANU

The university provides a [list of resources](#) that will help answer your pre-arrival questions and guide you through the first few weeks at the university, including a checklist containing important information about arrival preparation, student administration and what you can expect when you arrive in Canberra.

Useful Links

Click below for more information:

- [ANU all campus map](#)
- [ANU service desk community support](#) (if you need to request a password reset)
- [Transport Canberra](#)
- [Lost On Campus app](#) (an app to help find your way around ANU)



What to bring checklist

This is a helpful list of suggestions of items to bring to Burgmann College.

1. Pillow and 2 pillowcases. The College does not provide pillows.
2. Bed sheets, 2 sets; Studio apartments (Queen size), three and five bedroom apartments (King Single). To find out more about what is in your accommodation, please refer to the Resident Handbook sent with your offer.
3. Doona and Doona cover (2 sets)
4. blanket.
5. Towels (2)
6. Washing basket. A collapsible laundry hamper is recommended.
7. Clothes hangers
8. Clothes washing powder/liquid. It is also a good idea to learn the basics of doing your own laundry.
9. Toiletries.
10. A shower robe and thongs/sandals.
11. Your own Medicare card and/or your private health fund card.
12. Formal attire for College functions: Commencement (March) and Valeté (October).
13. Your laptop and your study materials.
14. Mobile phone & charger
15. USB outlet/surge protected power board. For more information on the electrical items, see our guidelines at the end of this document.
16. Portable shower caddy
17. Under-bed storage boxes like Archive boxes. These can be purchased from Kmart.
<https://www.kmart.com.au>
18. A favourite cup, a set of cutlery, microwavable containers, tea towel, small cooking pot and utensils for cooking. (these can be purchased after arrival, depending on your requirements).
19. A plastic container with a lid to store items.

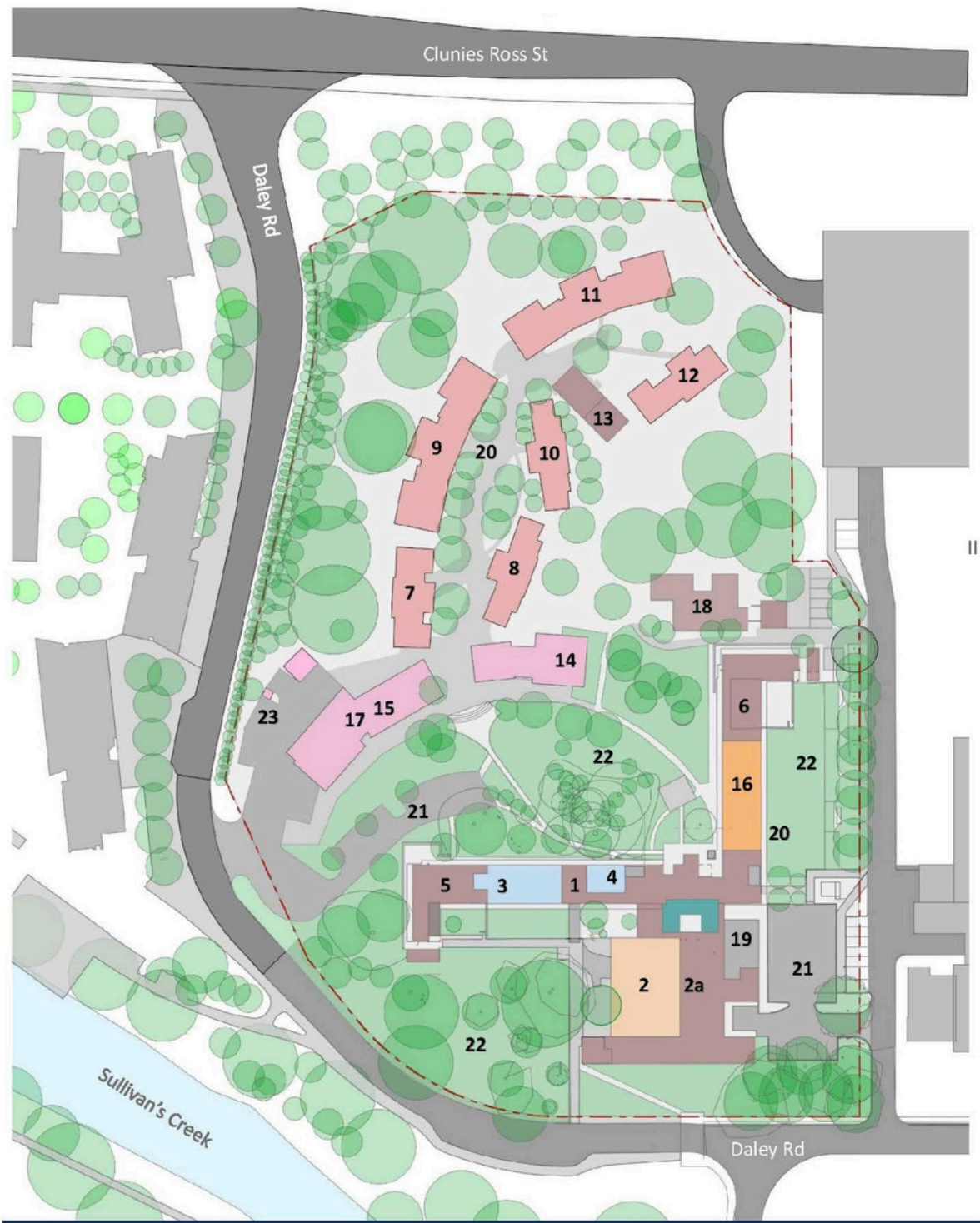
Hints & Tips

- Anything collapsible might be handy. Our rooms are comfortable, but being organized and using smart storage helps to keep your environment tidy.
- Consider what clothes to bring: for study, for lounging casually, going out and College functions. Please also consider that Canberra can get cold in winter, so consider bringing a coat and some jumpers.
- International plugs will not work. You will need to purchase an Australian Standards converter plug.



Burgmann College Site Plan

National Botanic Gardens



- | | | |
|-------------------------------|---------------------------|--|
| 1. Reception | 9. The Village – C Block | 17. Music Room |
| 2. Dining Hall, 2a. Kitchen | 10. The Village – D Block | 18. The Lodge (Principal's Residence) |
| 3. Principal's Office | 11. The Village – F Block | 19. Bike Storage - locked |
| 4. Deputy & Dean's Office | 12. The Village – G Block | 20. Bike Storage - outside |
| 5. Undergraduate Homer Wing | 13. Village Laundry | 21. Resident Parking - Burgmann Permit |
| 6. Undergraduate Barassi Wing | 14. Chapel | 22. Emergency Assembly Areas |
| 7. The Village – A Block | 15. Computer Room | 23. DOSA (Designated Outside Smoking Area) |
| 8. The Village – B Block | 16. Common Room | |