



**Burgmann  
College**

# 2026 Resident Handbook

# CONTENTS

Burgmann College acknowledges the Ngambri and Ngunnawal people who are the traditional custodians of this land and pay respect to the Elders of the Ngambri and Ngunnawal Nations both past and present. We extend this respect to all Aboriginal and Torres Strait Islander peoples and acknowledge that sovereignty was never ceded.

---

## **From the Principal**

PAGE 1

## **Quick Information**

PAGE 3

## **College History**

PAGE 4

## **College Values**

PAGE 7

## **Community**

PAGE 10

## **Residential Services**

PAGE 17

## **Dining Hall**

PAGE 29

## **College Standards**

PAGE 32

## **Facilities**

PAGE 36

## **Meet our Staff**

PAGE 42

## **Helpful Contacts**

PAGE 46

## **Map of Burgmann College**

PAGE 48

## **Map of ANU**

PAGE 49





*Image: Principal  
Dr Brenda Holt*

## From the Principal

Welcome to Burgmann College, a unique and transformational residential community situated on the land of the Ngambri and Ngunnawal peoples, and affiliated with the Australian National University.

Since 1971 we have fostered a culture of respect, inclusivity and egalitarianism, where students can grow academically, socially, and personally into the leaders of tomorrow. College life is exciting and challenging as you learn and grow with 375 other residents from all over the world, studying a range of degrees in a variety of disciplines. We believe that every resident matters and will leave us a better version of themselves.

Our community thrives on the participation of our residents, who share their talents, abilities and energies for the common good, while celebrating diversity, curiosity, and personal development. Life at College is a rich smorgasbord of opportunities for your growth and enrichment. Putting yourself out there, learning to be brave, understanding your strengths and growth areas are some of the best parts of Burgmann.

On offer is a rich assortment of support for you to grow as a person, so that when you leave us, you will feel better equipped to make a difference in the world. Our College is more than just a place to live; it is a home where lifelong friendships are formed, ideas are shared, and every individual is valued. Burgmann College is a place where you can challenge yourself, support others, and contribute meaningfully to the world around you.

We are excited to see your growth and development at Burgmann and the positive impact you will have on our community!

Welcome to Burgmann College.  
Welcome home.



**Dr Brenda Holt**  
*Principal*

## Quick Information

As an incoming resident, you are required to read the entire handbook. However, below are nine key points you should make a special effort to remember throughout your time at Burgmann College.

### Burgmann College's Values

Page 7

There are three main values that define Burgmann College. Read more here.



Respect



Inclusivity



Egalitarianism

### RA Duty Phone Number

6125 6099 (After-hours)

### ANU Security Phone Number

6125 2249 (Available 24/7)

### Mealtimes at Burgmann College

Page 30

### SASH Policy & Procedures

Page 33

### Bullying, Discrimination & Hazing

Page 33

The College maintains a zero tolerance policy towards sexual harassment, sexual assault, bullying, discrimination and hazing.

### Reception Opening Hours

Monday - Friday 8:30am - 5:00pm

### Alcohol & Drug Guidelines

Page 33

Burgmann College does not permit the use, supply or sale of illicit drugs in our community and such use will jeopardise a resident's Occupancy Agreement. However, any resident who self-refers to staff for substance abuse, will receive a supportive response and be referred to appropriate support services.

### Smoking/Vaping

Page 34

Burgmann College and the ANU are smoke free zones and smoking is not permitted inside buildings or on college grounds except for at the Designated Outdoor Smoking Area (DOSA); this includes e-cigarettes and vapes. (See location map for DOSA on page 48)

Possession and/or consumption of legal highs such as nitrous oxide (NOS) is prohibited at Burgmann College and in all ANU residences. Non-compliance will constitute a breach of your Occupancy Agreement and/or result in disciplinary action.

### Noise

Page 34

Residents should be able to sleep and/or study at virtually any time whilst living at Burgmann College. It is important that residents can use their bedrooms for serious study and not have to go to the libraries for peace and quiet. The College has a strict noise curfew of 11pm, except during examination periods where it is 10pm.



## College History

*Burgmann College founders had a vision of creating a community where young people of all faiths could live and study together, in a spirit of diversity, individual growth and mutual respect*





## Background

Burgmann College is named after Bishop Ernest Henry Burgmann, affectionately known as *Burgie*. He served as the Anglican Bishop of Goulburn from 1934, and became the first Bishop of Canberra and Goulburn from 1950 to 1960. Bishop Burgmann was a man of wide interests, with strong views on social justice and education, believing passionately in the unfettered search for truth. He championed the founding of The Australian National University and was part of the Australian delegation to the United Nations Assembly in Paris in 1948 where he contributed as an advisor, drafting the United Nations Declaration of Human Rights.

Burgmann College was founded through the efforts of ecumenical and community leaders from all over Australia, making it a truly national initiative designed for a national university, not just a Canberra based project. The College was originally sponsored by the Anglican, Baptist, Presbyterian, Methodist churches and the Churches of Christ. Four of these denominations are still represented on the College's Council today. The original master plan, developed in 1967, envisioned facilities for 500 residents, including a multi-denominational chapel and shared community spaces.

The College welcomed its first residents in early 1971 and reached full occupancy by midyear. Its official opening was held on 31 July 1971. Today, Burgmann College is home to approximately 378 undergraduate and postgraduate ANU students from diverse social and cultural backgrounds. The College fosters an inclusive environment and welcomes residents of all faiths and those of none.





## **Ethos**

Burgmann College fosters both individual freedom and personal growth, while also emphasising a strong sense of collegiate commitment, responsibility, and contribution. The College community takes pride in supporting the academic and social development of its residents, offering leadership opportunities, academic support, and programs that nurture self-awareness, independence, resilience, emotional intelligence, and personal growth. Burgmann has earned a strong reputation for encouraging residents to explore opportunities, whilst actively supporting and celebrating their achievements. Staff are deeply committed to cultivating a family-like atmosphere, ensuring every resident feels safe, respected, and included, in their home away from home.

---

## **Vision**

The founders of Burgmann College envisioned a community where young people of all beliefs could live and study together in a spirit of diversity, personal growth and mutual respect. This vision remains central to the College today, which continues to support a residential learning community within the ANU, striving for academic excellence and leadership development in a sustainable, caring and vibrant environment that embraces diverse faiths, cultures and disciplines.

## **Reconciliation Vision**

Burgmann College aspires to play an active role in Australia's national reconciliation movement. Its Reconciliation Action Plan is focused on building meaningful relationships and engaging respectfully with Aboriginal and Torres Strait Island People, supporting and creating opportunities. The College continues to expand its Bursary and Scholarship programs to better support Aboriginal and Torres Strait Islander students.

Established in 2008, the Doomadgee – Burgmann Community Partnership has fostered strong relationships with key members of the Doomadgee community in remote north-west Queensland, reflecting the ongoing commitment to reconciliation.





## College Values

*Burgmann College is a value-aligned community, which helps maintain its strong identity and ensures that it operates with integrity and authenticity*



Burgmann College has upheld the values of respect, inclusivity, and egalitarianism since its founding, principles deeply rooted in the vision of its first Master, Professor David Griffin. These values continue to shape a vibrant, caring, and fun culture that community members are proud to be part of.

Values-aligned leadership plays a vital role in fostering this positive environment, influencing the behaviours, attitudes, and norms that define daily life at the College. As a result, residents and staff feel supported, empowered, and genuinely valued.

Our commitment to respect, inclusivity, and egalitarianism remains central to who we are and how we live and work together. By joining our community, you agree to uphold and embody these values in all aspects of College life.



# Our Values



## Respect

Our culture is built on respect for ourselves, each other and our shared home, and is reflected in our words and actions. Residents are asked to maintain a balance between enjoyment of personal freedom and respect for the freedom of others; between creative individualism and collegiate cooperation. This balance is central to the College's origins and is fundamental to our community.



## Inclusivity

Burgmann College is committed to providing a safe and inclusive culture. We celebrate and support each resident to express their unique selves within an inclusive and collegiate environment. This is one of the aspects that contributes strongly to residents feeling safe in their home away from home environment here at Burgmann.



## Egalitarianism

We maintain a non-hierarchical ethos valued by our founders, with undergraduate and postgraduate students having equal access to all facilities and no distinctions between 'junior' and 'senior' residents. Residents are encouraged to contribute to Burgmann College and leadership roles provide opportunities to participate in important decision making that affects the whole community. Consultation and collaboration continues to build strong relationships at Burgmann and this ethos provides a framework for our thriving community.





## College Community

*'Family' is the word most often used by both residents and staff to describe our community. Every resident is known, supported, and encouraged to reach their highest potential, both academically and personally*



## Residential Staff

Burgmann College is unique in having its Principal, Deputy Principal, and College Dean living onsite, sharing their homes and families with the community. This close connection fosters a warm and inclusive atmosphere, and you're most welcome to reach out and say hello when you arrive. You'll receive a Welcome Book prior to your arrival, which offers more insight into our residential community and environment.

## Student Wellbeing

Student wellbeing is a priority at Burgmann College and staff are dedicated to providing a safe, healthy and inclusive community for all our residents. A key focus is providing strong support networks and pastoral care for students transitioning to university life and living away from home. Pastoral care is central to our community and we encourage students to connect with our College Dean, Deputy or Principal, all of whom live onsite and are actively involved in College life.

Burgmann College has a range of support networks, and you'll learn about these during your Orientation.

## Residential Advisors (RAs)

Residential Advisors (RAs) are fellow students who live on your floor or block and are here to help you thrive at Burgmann College. Trained in Fire Safety, First Aid, and Youth Mental Health First Aid, RAs offer confidential pastoral and academic support to residents. They can also refer students to the Principal, Deputy Principal, College Dean, or external services when needed.

There are two RAs per floor in the Homer and Barassi undergraduate wings, one RA in Mortlock, and one RA per Village block. You'll meet your RA when you arrive, and they'll be a key source of support throughout your time at College.

RAs are rostered on duty after hours when Reception is closed and are available to assist with a range of issues, including lost keys, first aid, noise complaints, and critical incidents. You can contact the RA on duty by calling 6125 6099. For more details, visit our website or check THE HUB.





## Burgmann Residential Association (BRA)

The Burgmann Residents' Association (BRA) is the organisation run by a committee of residents to support all those who live at Burgmann in all facets of their college lives. BRA organises and initiates a wide range of activities and events for residents to get involved in, providing a wide range of social, arts, sporting and sustainability activities.

The committee also ensures that all residents are given a voice in college matters, acting as an important bridge between college staff and the residents. BRA provides the voice for the residents in the running of the college through communication with the Principal, the College Council and the Board of Management.

The BRA House Committee is headed by the Executive, consisting of the President, two Vice-Presidents, the Treasurer and the Secretary. There are four Sports and two Arts Representatives who are also part of the BRA House Committee, all of whom are members of their respective Interhall Sports and Arts Committees.

These committees organise and supervise all interhall sports and arts events throughout the year, giving you the opportunity to meet and interact with not only your fellow Burgmann residents, but also residents from the other halls and colleges of ANU. More information about BRA can be found on the website portal, **THE HUB**.





## Interhall Sport

---

Burgmann College's sports program involves competitive games between residential halls on the ANU campus. BRA Sport Representatives coordinate many sports including soccer, swimming, netball, basketball, volleyball and AFL. For more information and to find out how to get involved, check out the BRA area on **THE HUB**.



## Arts

---

Burgmann College's arts program extends to many different disciplines and residents are encouraged to take part in as many activities as they like, including for example, music, drama, visual arts and public speaking. Arts Representatives are responsible for coordinating interhall arts initiatives and competitions, as well as arts programs within the College. Check out **THE HUB** for more information.



## Events

---

Burgmann College is well known for its community culture and there are many regular activities and special events that take place during the year. We have a strong arts and sports culture and residents enjoy the many opportunities to celebrate together at formal and casual events. Staff and BRA committees work closely together to ensure events are safe, welcoming and enjoyable for all who attend. You will find more information about our College events on **THE HUB**.



## Luigi's

---

Luigi's is a weekly Sunday tradition at Burgmann College of morning tea with scones, jam and cream, tea and coffee. Named after foundation resident and former Principal, Rev. Dr. Lewis Rushbrook, it's a relaxed time for residents to come together and socialise. You'll find out more about Luigi's on **THE HUB** and the internal Burgmann Facebook page.



---

## Leadership Opportunities

Burgmann College offers over 50 student leadership opportunities each year. Residents play an exceptional role in College governance, holding seven of the 32 seats on the Burgmann Council, the College's highest governing body, and three of the ten positions on the Board of Management, each with full voting rights. These roles not only empower residents to influence decisions that directly affect their community, but also provide valuable experience in governance and leadership, helping to prepare the next generation of leaders.



## Academic Support

Burgmann College encourages all residents to contribute to the academic support and welfare of others through networking, peer assistance, cooperative group study and direct assistance. Burgmann has dedicated student leaders known as Academic Network Coordinators (BANC) who help residents make connections with the many other talented and experienced members of the college to assist with their studies. BANC members oversee specific areas and organize specialised events to help residents with their coursework. For more information, please see **THE HUB**.

The College has several senior staff living onsite, including the Principal, Deputy Principal, College Dean, and Residential Fellows whose focus includes academic assistance. Residents are encouraged to contact residential staff which include our Residential Fellows as detailed in the next section.



## Residential Fellows

Burgmann College is privileged to have three Residential Fellows living onsite. Their role is to support students throughout their everyday engagement by providing encouragement and academic guidance.

---

More information about our Residential Fellows can be found on our website.

## Professor Asmi Wood

BE LLB (Hons) PhD, Law, Aboriginal and Torres Strait Islander Law, International Law, Religion

**ANU College of Law**



## Wil Laura

B Sc (Meteorology), M Sc (Environment and Climate Change)

**PhD candidate, Fenner School of Environment and Society, ANU**



## Mat Stasak

B Comm

**Senior Advisor to the Minister for Trade and Tourism**



## Alumni

Burgmann College is proud to be supported by a vibrant alumni community. Throughout the year, various alumni events are held, and current residents are warmly encouraged to participate.

Our alumni play a vital role in College life, offering mentorship to residents and contributing generously to the College's Advancement Program. Residents who have lived at Burgmann for at least one year automatically become part of our alumni network upon departure. The College maintains strong connections with past residents through social media, newsletters, and events. To learn more, visit the Alumni & Friends section of our website.

[Alumni | Burgmann College \(anu.edu.au\)](http://anu.edu.au)



## Sustainability

Burgmann College and residents are working together on initiatives to reduce our carbon footprint via the Burgmann College Sustainability Action Group (BurgSAG). Just doing little things makes a big difference such as using the correct bin for your rubbish and turning off lights when you leave your room. If you're passionate about this area, you can join our Sustainability Committee.



## Residential Services

*"As an international student who came to a foreign country, I knew nobody here and had no friends or family to rely on for support. But it took me less than a day of living at Burgmann to forge friendships that I am sure will endure for years to come."*

*Anaina Langrana 2024 BRA President*





## Reception

At Burgmann College, staff are committed to fostering a welcoming, family-like atmosphere where residents feel safe, respected, and included. Reception is open Monday to Friday from 8:30am to 5:00pm, with a lunch break closure from 12:20pm to 1:00pm. Our Reception staff are here to assist with any enquiries and can provide a wide range of information. Whether you need help with accommodation, have a concern, or simply want a friendly chat, you're always welcome to drop by.

## Arrival Procedures

When you arrive at Burgmann College, your first stop is Reception for check-in. You'll receive your room access card, along with an Information Pack containing essential information to help you settle in. If you arrive after hours, please contact the Duty Residential Advisor (RA) on **6125 6099**, who will assist with your check-in.

## Keys & Access

To access all exterior doors, common areas, study spaces and your room at Burgmann College, you'll need your access card. Please note that your bedroom door locks automatically, so always take your access card with you when leaving your room. If you lock yourself out, contact Reception during business hours. After hours, please call the Duty RA on **6125 6099** for assistance.

For the safety of our community, it's essential that you do not give your access card to anyone else. Maintaining a secure environment is a shared responsibility and we all play a part in keeping Burgmann College safe.

## Communication

Burgmann College communicates with residents by phone, SMS and your ANU email address. **Please keep your mobile phone and email address current by notifying Reception of any changes.** The College uses the resident management platform *StarRez* for all residential communications, along with the Burgmann Facebook page for community updates.



## Mail

Mail and packages can be addressed with your name to *Burgmann College, Building 52, Daley Road, Acton, ACT 2601*. Mail is delivered daily, Monday to Friday and is held at Reception. Residents will be notified by email when items arrive and can collect them during business hours (Monday – Friday, 8.30am – 5pm).





## The Hub

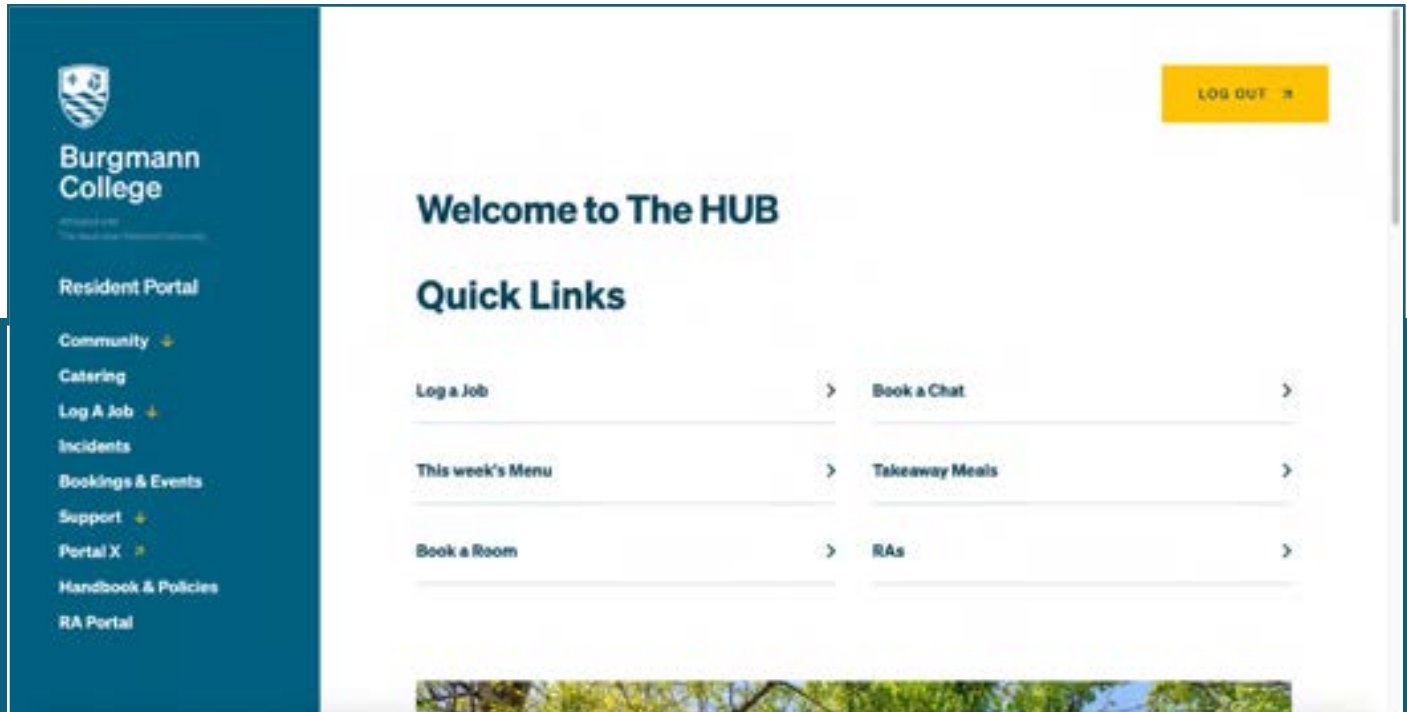
THE HUB is Burgmann College's internal portal for current residents, accessible via login and password through the main College website. It provides essential information to support your experience at College.

Through THE HUB, you can stay up to date with College news and policies, sign up for events, order takeaway meals, request assistance, and manage key aspects of your residential life.

Some of the things you can do through THE HUB include:

- Access support and wellbeing information
- Log IT, Maintenance and Housekeeping requests
- Order takeaway meals
- View the weekly dining hall menu

**You'll receive an email with a link to set up your password when you arrive at Burgmann College.** Should you have any issues please come and speak to our Reception staff.





## Cleaning

**It is your responsibility to keep your room or apartment clean.** Vacuum cleaners are available on each floor in Homer and Barassi, while Village blocks have a vacuum cleaner, mop, and broom located in the ground floor storeroom. For shared accommodation, we encourage residents to create a cleaning roster to help maintain a tidy living space.

Please keep all common areas tidy by picking up after yourself. Whilst College kitchenettes, bathrooms and corridors are cleaned regularly by staff, it is each resident's responsibility to keep these areas tidy.

Crockery and cutlery taken to rooms **must be returned to the dining hall** after use.

Residents can contact our Housekeeping Team via **THE HUB** (Log a Job) to log a request for cleaning assistance.



## IT

Burgmann College uses ANU Wi-Fi and hard-wired internet services throughout the campus. All rooms and apartments are equipped with wireless access points and ethernet ports. Residents can connect to ANU-Secure using their ANU ID and password. ANU IT Services is responsible for managing all Wi-Fi and ethernet connections onsite. Residents are expected to comply with both ANU and Burgmann College policies and guidelines for internet use. To request support or report an IT issue, log in to the ANU Service Desk using your ANU ID and password to submit a support request.

Link to IT Service desk:

<https://servicedesk.anu.edu.au/sp>

You can also directly email them:

[servicedesk@anu.edu.au](mailto:servicedesk@anu.edu.au)

**Please ensure you include the following information when you log an IT job:**

- Contact number and email
- Port number
- Your location including building & room
- Detailed description of your issue
- Date and time of issue
- Device type (Mac, Windows etc)
- Have you connected to this service successfully before?
- Are there any displayed messages? eg: 'Limited or no connectivity' or 'No signal'



## Housekeeping

Our Housekeeping Team works to ensure that Burgmann College facilities are kept clean and well-maintained through regular cleaning schedules. If you need assistance, please log a request via THE HUB (Log a Job). For urgent housekeeping issues outside business hours, the Duty Residential Advisor (RA) is available to help, call **6125 6099**.

## Maintenance

If something in your room needs attention, such as a light globe replacement, you can log a maintenance request via THE HUB (Log a Job). For urgent maintenance issues outside business hours, please contact the Duty Residential Advisor (RA) on **6125 6099** for assistance.

## Lost Property

Lost property is managed by our Housekeeping team. If you believe you have misplaced something, please visit Reception to check. Burgmann College does not accept responsibility for any loss or damage to residents' personal items.

## Refrigerators

Residents living in our undergraduate building may request permission to have a small bar fridge in their room. **Residents must ensure their fridge is tested and tagged if it is second hand.** Village accommodation includes a refrigerator.

## Special Furniture Requirements

Residents with medical-related furniture requirements should contact the Deputy Principal at least 10 days before their move in date. At the Deputy Principal's discretion, approval may be granted for furniture to be modified or temporarily replaced.

Any approved changes will consider factors such as available space, staffing limitations, Work Health and Safety regulations, the necessity of the request, and its impact on the broader community. Where prior arrangements are made, staff may assist with moving approved furnishings. The College reserves the right to prohibit any furniture items deemed to pose a health or safety risk.





## Guests

Residents are welcome to invite friends and family to stay at Burgmann College for one or two nights **only**. Housekeeping can provide a mattress free of charge, subject to availability. A nominal charge applies if meals are required during the guest's stay. Please refer to the Resident Guest Guidelines on **THE HUB** for more information.

## Financial Assistance

Each year, the Scholarship and Bursary Committee awards a number of bursaries and scholarships to residents who can demonstrate financial need, academic excellence and community contribution. Please refer to **THE HUB** and Burgmann College website for more information about financial assistance.

## Fines

In accordance with the Occupancy Agreement, Burgmann College may issue a fine to a resident if their behaviour falls outside the College's community standards or if damage has been caused to property.

## Wildlife Management

Burgmann College has active pest control measures in place which are monitored regularly. To help reduce pests on campus, please ensure your room is kept clean and tidy and no food items are left open or unsealed. Village residents are asked not to leave rubbish outside or in walkways as many possums live nearby and will be attracted. Do not feed possums. Please notify Reception or log a job with maintenance via **THE HUB** if you have any concerns.





## Security

Burgmann College is committed to providing a safe and secure environment for all residents. Access to College buildings is only via a resident's access card. Residents must not share their card with other people. Some main building doors have an alarmed, timed mechanism, operating 24 hours.

Duty RA's check all entry doors are securely locked each night and are available for any after-hours emergencies. ANU Security can also be contacted on **6125 2249**.

Residents are responsible for the safety of their personal belongings. Always lock your room and apartment doors. The College does not accept responsibility for any loss or damage to personal property and residents are encouraged to insure valuable items they keep at College.

Should you find yourself locked out after hours please contact the Duty RA on **6125 6099**.

For more information about safety and security on the ANU campus, including a link to download the ANUOK app, please visit: [Safety and security at ANU - ANU](#)



## Ambulance & Insurance

Burgmann College does not cover ambulance costs for students. It is strongly advised that students arrange their own ambulance cover. In the event of an emergency, if a student has been assessed by an RA or staff member and requires an ambulance, it will be assumed that the student has ambulance cover. The College will not be held liable for any ambulance related costs. International students are required to have suitable Health Insurance cover.

---

## Emergencies & First Aid

All sickness, injuries and incidents must be reported to College staff or the Duty RA. In the event of an emergency, call 000 immediately. Then contact College Reception (Business hours: Monday – Friday, 8.30am – 5pm) or the Duty RA (after hours). All RAs have completed a First Aid course and have access to a First aid kit. The Duty RA number is **6125 6099**.

---

## Corridors

**To ensure safety and compliance with fire regulations, all corridors must remain clear at all times as they serve as fire escape routes.** Do not leave shoes, furniture and personal items from your room in these areas. Weekly checks are conducted by staff to ensure corridors are kept clear. Residents will be contacted should personal items are found in these areas.

---

## Electrical Safety

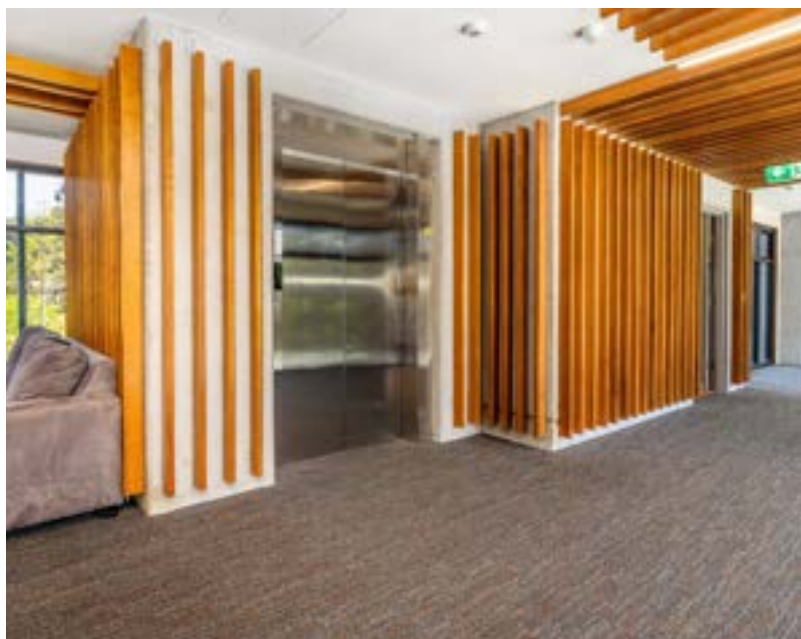
Burgmann College **strongly** recommends that all residents undertake electrical testing and tagging of personal electrical items to ensure safety. Residents are **required** to visually inspect personal electrical equipment regularly for signs of wear and tear. Small personal bar fridges and portable evaporative coolers **must** be tested and tagged before use onsite. Please see Reception for more information.

---

Double adaptors are **not** permitted onsite. Only power-boards with surge protection, purchased in Australia and meeting Australian Standards may be used. The use of travel adaptors and multi-plug devices in a resident's room or anywhere in Burgmann College is permitted **only when the adaptor or device is made to Australian Standards and bought in Australia**. It is prohibited to use items that do not meet these Standards or are purchased outside of Australia. For fire safety and electrical loading limitation, residents are **not permitted to cook in bedrooms**.

Burgmann College will not be held responsible for faulty or non-compliant personal electrical items. Please read the College's Electrical Safety Test and Tag Guidelines found on **THE HUB**. A general guide for personal electrical items allowed at Burgmann College is provided at the end of this section.

---







## Emergency Assembly Areas

Burgmann College holds regular Fire Drill training and all residents are expected to take part. To prepare, please check the emergency diagrams in your accommodation for the closest evacuation point.

### Emergency Assembly Areas:

Front lawn near Daley road

Meadows Lawn between Burgmann College & John XXIII College

Central courtyard area between Village and main College Building



## Emergency & Evacuations

In the event of an emergency you will be notified via the loudspeaker system and by Fire Wardens. Should an evacuation be announced, **leave all your belongings behind and proceed immediately to the nearest evacuation area.** Follow the directions of Fire Wardens and Fire Brigade until you are informed it is safe to return to your room or apartment. Please familiarise yourself with the emergency diagrams displayed in your room and around College to locate your closest evacuation point.

Burgmann College has separate fire and emergency systems for Homer/Barassi undergraduate wings and the Village. These systems are highly sensitive and must not be tampered with. Both steam and smoke can trigger alarms and result in the Fire Brigade attending. Residents may be liable for the costs associated with false alarm call out. Intentionally triggering any aspect of

the fire or emergency infrastructure will not be tolerated.

The undergraduate building fire panel has a two-stage alarm (notification: beep beep and evacuation: whoop whoop). All of the activation points in the undergraduate building of Homer & Barassi, including the smoke detectors, are **wired directly** to the ADT monitoring service. This means that, regardless of what detector/break glass is activated, the Fire Brigade is notified immediately and will always attend.

This is different to the Village system where Village residents must physically push a break glass panel if they need to alert the fire brigade and college. These are located outside the Village and in every block. Village smoke detectors are not wired to the ADT monitoring system.

## Flammable Items

**Open flames and other flammable items are not permitted in resident rooms.** This includes candles and incense. **There is no cooking permitted in bedrooms.**

Please be mindful of any items cooking when using the kitchenettes in the undergraduate building. **Air fryers are not permitted** in undergraduate accommodation. For more information refer to the College's Electrical Safety Test & Tag Guidelines on **THE HUB** and the general guide for personal electrical items provided at the end of this section.

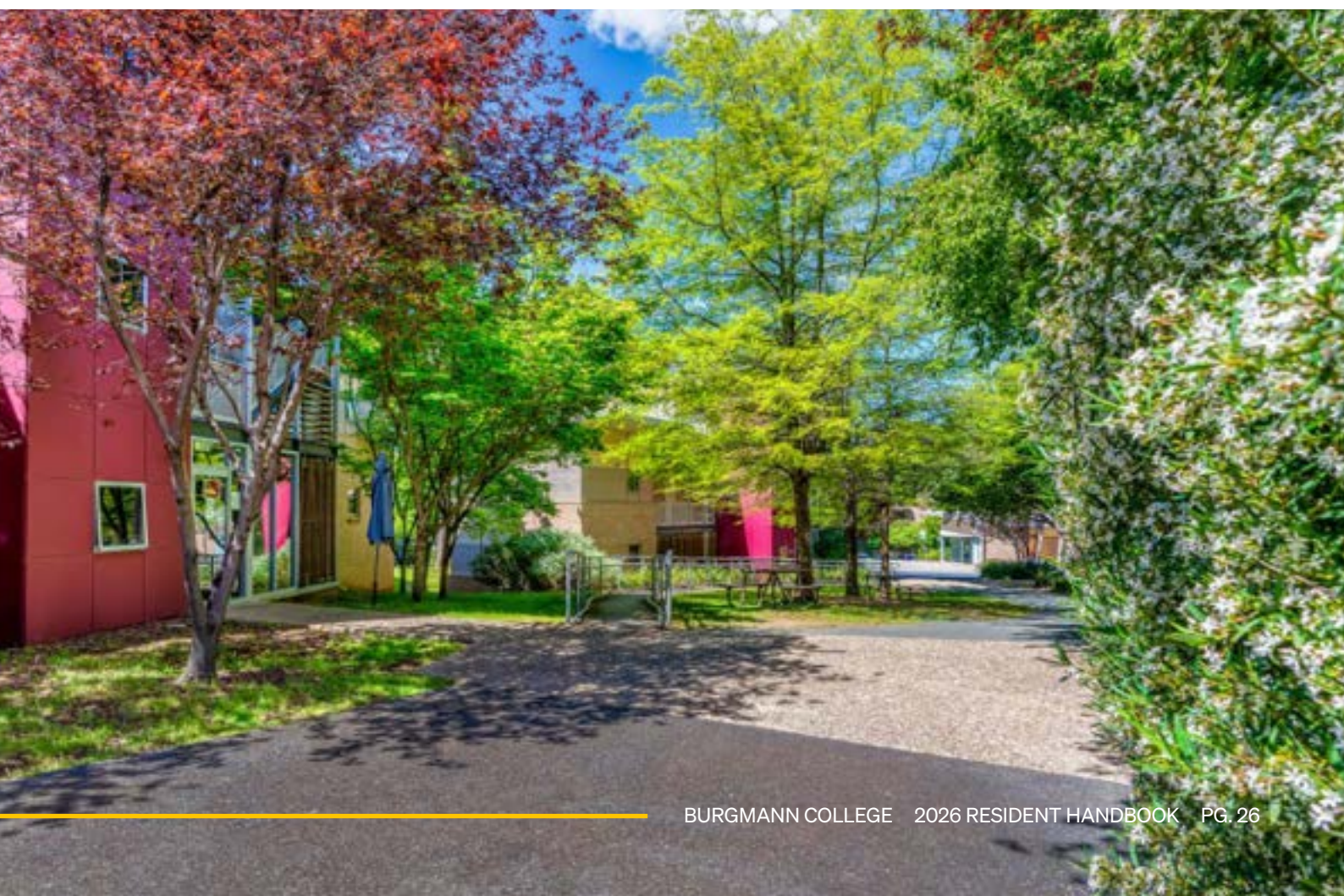
Residents are reminded of the importance of maintaining fire safety standards. If a smoke alarm is triggered and causes a false alarm, the resident responsible may be issued a fine to cover Fire Brigade callout fees. Intentional interference with any part of the College's fire infrastructure is a serious breach and will likely result in termination of a resident's occupancy agreement.

## Departure Procedure

When moving out, residents must ensure their room is completely cleaned and cleared of all personal belongings and furniture. Please ensure all items that were present in your room when you arrived, are left in your room when checking out at the end of your contract. You must ensure your room is clean and tidy, all rubbish placed in bins, posters taken off walls, crockery returned to the Dining Hall, surfaces wiped down, floor vacuumed, and all personal belongings removed.

Charges apply for any missing items and dirty rooms will result in a cleaning fee. Residents must vacate their rooms no later than 10am as per contract.

Room access cards **MUST** be returned to Reception or you will be charged for a replacement. An afterhours deposit box is located to the left of the Reception door.





## Guide for Personal Electrical Items Allowed at Burgmann College

### All Burgmann Bedrooms

---

#### Allowed

Small bar fridge\*, surge protected power boards, diffuser with automatic cut off, gaming console, small television, water kettle with automatic cut off switch, small portable coffee machine, hairstylers, small portable fan, electric razor, record/CD player, electric tooth brush, portable garment steamer, small portable vacuum cleaner (supplied each UG floor), portable evaporative cooler\*

#### Prohibited

Toaster, rice cooker, microwave, popcorn machine, sandwich maker, blender, iron (supplied each UG floor), air fryer, double adapter, electric blanket, portable heater, portable air conditioner

### Undergraduate Kitchenette

---

#### Allowed

Fridge\* (supplied), water kettle with automatic cut off switch (supplied), toaster (supplied), microwave (supplied), sandwich maker (supplied), popcorn machine

#### Prohibited

Surge protected power boards, diffuser with automatic cut off, gaming console, small television, small portable coffee machine, hairstylers, small portable fan, electric razor, record/CD player, electric tooth brush, portable garment steamer, small portable vacuum cleaner, portable evaporative cooler, blender, iron, air fryer, rice cooker, double adapter, electric blanket, portable heater, portable air conditioner

### Mortlock Lounge/Kitchen

---

#### Allowed

Fridge\* (supplied), surge protected power boards, diffuser with automatic cut off, gaming console, small television, water kettle with automatic cut off switch (supplied), small portable coffee machine, small portable fan, portable garment steamer, small portable vacuum cleaner (supplied), toaster (supplied), rice cooker, microwave (supplied), popcorn machine, sandwich maker (supplied), blender, iron (supplied)

#### Prohibited

Hairstylers, electric razor, record/CD player, electric tooth brush, portable evaporative cooler, air fryer, double adapter, electric blanket, portable heater, portable air conditioner

\*These need to be tested and tagged

## Village Lounge/Kitchen

---

### Allowed

Fridge\* (supplied), surge protected power boards, diffuser with automatic cut off, gaming console, small television, water kettle with automatic cut off switch (supplied), small portable coffee machine, small portable fan, portable garment steamer, small portable vacuum cleaner (supplied each block), toaster (supplied), rice cooker, microwave (supplied), popcorn machine, sandwich maker, blender, iron (supplied), air fryer\*

### Prohibited

Hairstylers, electric razor, record/CD player, electric tooth brush, portable evaporative cooler, double adapter, electric blanket, portable heater, portable air conditioner

\*These need to be tested and tagged

*Note: It is prohibited to use items that do not meet Australian Standards or are purchased outside of Australia.*

Check with our Manager of Residential Services regarding any items not on this list.

---





## Dining Hall

*Our dining hall is the heart of Burgmann College, a welcoming space to connect and build relationships over a delicious meal*





---

Just as the heart of a home is often the kitchen, so is the Dining Hall at Burgmann College. It's a vibrant space where staff and residents come together to connect, encourage one another, and enjoy fellowship over delicious meals.

Burgmann promotes the Table Rule, a tradition of joining others at a table until it is full before starting a new one. This helps new residents feel welcome and encourages community building. The Dining Hall hosts many resident events including Orientation Week, Bush Week, themed dinners, guest speakers, BRA events, trivia and talent nights.

Special Celebration meals are provided during the year including Commencement Dinner, NAIDOC Week Bush Luncheon, and Christmas in July. These are held both onsite and at venues across Canberra.



## Mealtimes

Water, tea, coffee, cordial, and bread is always available for residents with catering packages in the Dining Hall which is open from breakfast until 10.30pm daily. All residents must wear footwear with a solid sole in the Dining Hall and an appropriate standard of dress as this is a public area. Residents can find out more about the dining hall dress codes, weekly menu, takeaway meals and provide feedback about catering via **THE HUB**.

### Mealtimes are as follows:

Continental Breakfast	Everyday	6:30am - 10:00am
Hot Breakfast	Everyday	6:30am - 9:30am
Lunch	Everyday	12:30pm - 1:30pm
Dinner	Everyday	5:30pm - 6:45pm

---





### Catering & Dietary Needs

Burgmann College contracts a professional catering company to provide meals onsite. Caterers cover all dietary requirements including, and not limited to, vegan, vegetarian, gluten free, coeliac, halal, kosher and nut allergies. If you require a special meal plan our experienced kitchen staff are ready to assist. **Please ensure your dietary information is provided prior to arrival, by emailing our Reception staff. [reception@burgmann.anu.edu.au](mailto:reception@burgmann.anu.edu.au)**

### Takeaway

Burgmann College encourages residents to eat together in the Dining Hall, to foster community and connection. However, this is not always practical given the varied university course requirements and extra curriculum commitments. To support residents with busy schedules, a takeaway container can be requested during normal serving times.

If you are unable to attend lunch or dinner during standard mealtimes, residents can order a takeaway meal via **THE HUB**. Takeaway meals are collected from the fridge in the dining hall and will be labelled with your name. Meals can be reheated using the microwave in the dining room. Sandwich packs can also be ordered and collected from the kitchen at the beginning of the day. Residents can request this meal via **THE HUB**.

### Crockery & Cutlery

**Residents are strongly encouraged NOT to remove crockery and cutlery from the Dining Hall.**

Village residents must note that due to wildlife living close by, no food is to be left outside of their apartments.





## College Standards

*Burgmann College is committed to providing a safe and respectful environment for all residents*



---

Burgmann College is unwavering in its commitment to a safe, inclusive, and respectful community. Supporting residents is at the heart of what we do, and we expect all students and staff to demonstrate the highest levels of integrity, respect, and responsibility in their behaviour.

---

## Gender Based Violence Prevention & Response

Burgmann College is committed to the safety, dignity, and wellbeing of every member of our community. We have zero tolerance for gender-based violence in any form, including sexual assault, sexual harassment, relationship abuse, and other harmful behaviours.

The College has a Gender-based Violence Prevention and Response policy in place. This policy clearly outlines behaviours that are unacceptable at Burgmann and ensures that disclosures and reports are responded to in a consistent, timely, and trauma-informed manner. The College also prioritises prevention by fostering a culture of respect, consent, and accountability.

All residents are expected to actively contribute to this culture by challenging harmful behaviours, supporting one another, and engaging in college programs that strengthen awareness and safety. You can find the full policy and our approach to preventing gender-based violence on our website.

## Bullying, Discrimination & Hazing

Burgmann aims to provide a living and learning environment in which all members act with respect, care, and integrity. The rights, freedoms, and safety of every resident are of primary importance, and any form of bullying, discrimination, hazing, or gender-based harm is not tolerated.

Joining our community means committing to uphold Burgmann's values and ethos: respect, inclusion, and responsibility for the wellbeing of others. Reports of hazing, discrimination, or behaviours that reinforce harmful traditions are taken extremely seriously and will be managed under the College's policies and procedures.

Residents are expected not only to refrain from these behaviours, but also to take an active role in preventing them by supporting each other, modelling respectful behaviour, and being an active bystander against behaviours that compromise safety. The relevant policies and procedures are available on our website.

## Alcohol & Drugs

Burgmann College promotes a strong duty of care in allowing the responsible consumption of alcohol onsite by residents of legal drinking age. It is unacceptable to be drunk and disorderly at the college or to engage in drunken behaviour which causes harm or disturbance to people or property. Alcohol consumed in residential rooms is a **private activity** and should not be loud or disturb others.

It's unacceptable to take part in drinking games where the aim is to encourage over consumption, binge drinking or peer group pressure to drink.

Please read our Alcoholic Guidelines on our website where you will also find out about the support Burgmann provides for those who suffer from substance abuse and/or addictions.

Burgmann College does not allow the use, supply or sale of illicit drugs in our community and such use will jeopardise a resident's Occupancy Agreement. Any resident who **self-refers** to staff for substance abuse, however, will receive a supportive response and referral to support.



## Smoking & Vaping

Burgmann College and the ANU is a smoke free zone and **smoking is not permitted** inside buildings or on college grounds except for at the designated smoking area (DOSA); this includes e-cigarettes and vapes. (See location map for DOSA on page 48)

Possession and/or consumption of legal highs such as nitrous oxide (NOS) is prohibited at Burgmann College and in all ANU residences. Non-compliance will constitute a breach of your Occupancy Agreement and/or result in disciplinary action.

## Noise

Residents should be able to sleep and/or study at virtually any time in College. It is important that residents can use their study bedrooms for serious study and not have to go to the libraries for peace and quiet. Please remember that people in nearby rooms may be distracted by noise from other residents. It is not the situation that 'if no-one complains, it must be okay'.

Sound systems, TV's, computers and music instruments in rooms should be used at reasonable levels (defined as not being able to carry to neighbouring rooms vertically or horizontally).

Each undergraduate floor has a social 'convo' area meant for gatherings but please consider those residents in adjacent rooms as noise travels down corridors easily.

Noise tends to be amplified in the outside courtyards of the college and can disturb residents. Please be mindful of this.

Burgmann College has a strict noise curfew of 11pm, except during examination periods where it is 10pm.

As detailed in your Occupancy Agreement, residents are obligated to follow the directions of senior staff, in regard to noise as much as other matters. If members are bothered by undue noise at any time, they should politely and assertively make this known to the person causing the noise, if this is not too intimidating. If the problem persists, a Residential Advisor or the Duty RA may be called on. If this is ineffective, the Backup staff member should be approached.



## Student Code of Conduct

Your Occupancy Agreement explains our expectation of behaviour whilst being a resident at Burgmann College. The College's community standards are outlined in the Burgmann Grievance Policy, Alcohol Guidelines and SASH Policy & Procedure on our website.

Our expectation is that you have read, understood and will fulfill your obligations in this Agreement and in these policies when living at Burgmann, so that our community remains safe and respectful for all.

Harmonious community life in college depends on the respectful, cooperative conduct of individual residents. The good order, management and discipline of the College is the responsibility of the Principal. The basic principle of discipline in Burgmann College is that actions of an anti-social nature will be considered as breaches of discipline. Anti-social actions are defined as those actions that might reasonably be thought to cause offence to or infringe upon the rights and freedoms of another person.

Please read your Occupancy Agreement and check out **THE HUB** and Burgmann College website (Policies) for more information on expected Student Codes of Conduct.







## Facilities

*Set in park-like gardens on the banks of Lake Burley Griffin, Burgmann College offers residents access to a wide range of recreational and study facilities on campus*








---

Burgmann College is situated on the ANU campus, just a 5-minute walk to the ANU Medical or Law School and a 10-minute walk to the main ANU avenue. The College features long stretches of lawn, large shady trees and gardens planted with beautiful foliage.

There are many outdoor areas where residents can relax or study. During the warmer months, hammocks are available on the back lawn, adjacent to a BBQ area with café tables and benches, perfect for socialising or unwinding.

---

## Common Room

Located on the ground floor of Barassi Wing, the common room is a welcoming space for residents to relax, study or socialise. It features a large television screen with Foxtel and DVD player surrounded by a selection of comfortable couches. There is also a pool and table tennis table for recreational use. It has floor to ceiling windows, with tables and chairs for sunny daytime study or leisure.

The corridor to the left of the television must be kept clear at all times as it serves as a fire evacuation route.

## Le Chat Noir

Le Chat Noir Café & Bar is an important part of social life at Burgmann. Located at the end of the common room, it's very popular and sells coffee, drinks (alcoholic/non-alcoholic) and food. This is run by the College and staffed by students. Footwear is mandatory in the café and bar area.

Opening hours are:

Café - 9am to 11.30am (various morning)

Bar - between 7 - 10pm (various nights)

Please check the noticeboard in the café area, or the Le Chat Noir Facebook page for exact opening days and times.





## Residents Kitchen

The Res Kitchen is a fully equipped kitchen available for use by residents for hosting small events, group cooking sessions and baking treats. Residents can book the Res Kitchen via **THE HUB**.

## Study & Meeting Areas

Located close to Village accommodation, the Chapel and Lounge are separate from main residential areas and offer versatile spaces for residents to use. The Chapel features a grand piano and is used for meetings, training sessions and rehearsals. The adjoining Lounge is a large sunny room equipped with a TV with Foxtel, comfortable seating and a study area.

Situated opposite the Chapel and Lounge, the Computer Room contains desktop stations, a photocopier and is a designated quiet space. Residents are asked to be considerate of others while using this facility.

Next to the Computer Room, the College Music Room houses an upright piano and is available for residents to use for practice or informal rehearsals.

Burgmann College offers a wide range of study rooms across campus, designed to accommodate both small and large groups of residents. These spaces are thoughtfully decorated with artwork, chairs, and tables to create a comfortable, home-like environment that supports focused study and collaboration.

For information on available spaces and how to book a room, visit **THE HUB**.

## Accommodation

Burgmann College has two undergraduate wings named Homer (after the legendary Greek poet responsible for the *Iliad* and the *Odyssey*) and Barassi (named after Australian rules football player and coaching legend, Ron Barassi). Village accommodation is set apart from the main undergraduate building, nestled within landscaped gardens and connected by a central 'street'.

## Undergraduate

The following items are provided by Burgmann College in Homer & Barassi rooms: bed, mattress & mattress protector, pillow, desk, adjustable desk chair, bookshelf, bin, mirror, wardrobe, washbasin, ethernet ports and multiple double power points.

A "convo" (conversational/common area) and kitchenette is found on each floor of Homer & Barassi. Kitchenettes have a communal fridge, microwave, toaster, sandwich toaster and are regularly stocked with bread and milk by the College.

Residents are **not permitted** to cook in their rooms.

---

## Mortlock

Mortlock accommodation is located on the ground floor of the undergraduate Barassi wing and next to the common room. This is usually housed by second or third year residents and has 10 bedrooms in total. Mortlock is configured more like a shared apartment with a laundry, two shared bathrooms, a kitchen complete with stove, fridge and dishwasher, living area as well as an outdoor courtyard.





## Village

Village apartments offer self-catering options and vary in furnishings, depending on whether they are a studio, 2, 3 or 5 share apartment. All studio apartments, study bedrooms and lounge areas are carpeted. There are data, TV and multiple double power points throughout. Fees include the cost of electricity.

The following items are provided by Burgmann College in Village Studio Apartments: 2 burner stove top, microwave, bar fridge, dining table & chair, queen size bed, bedside table, desk, adjustable desk chair, lamp, wardrobe, kettle, toaster, heater, 2 bins, ensuite bathroom with shower/shower curtain, toilet/toilet brush, washbasin, mirror and cupboard.

The following items are provided by Burgmann College in Village 2, 3 and 5 bedroom apartments: kitchen/living area with 4 burner stove top, 200L fridge/freezer (5 Bedroom apartments have 2), sofa (5 bedroom apartments have 2), dining table and chairs.

Bedrooms have a king single bed, bedside table, desk and adjustable desk chair, wardrobe, lamp, 2 bins and a heater. A shared bathroom with mirror, separate showers/shower curtain, and toilet/toilet brush.



At Burgmann College, residents are encouraged to personalise their rooms. If you wish to display posters, please use blu tack only, as pins, tacks or nails are not permitted. The painting of rooms is not allowed.

Check our website for more detailed information regarding accommodation.



## College Heating and Cooling

The College's main building, including the Homer and Barassi wings, features central heating during the colder months. Village accommodation is equipped with individually controlled, wall mounted heating units.

## Laundry

Homer & Barassi wings have a laundry on each floor level with washing machines, dryer, iron and ironing board. Machines operate only between 7am – 10.30pm each day. There is **no charge** for using laundry machines at Burgmann College. Residents supply their own washing powder/liquid.

The Village has a communal laundry with washing machines, dryers, iron and ironing board. There is also a smaller laundry room in each Village block. There is **no charge** for using laundry machines at Burgmann College. Residents supply their own washing powder/liquid. Should you have any issues with our Laundry, please log a job to Maintenance via **THE HUB**.



## Vehicles, bicycles & parking

Burgmann College has a **limited number** of surface parking bays for residents. All parking on the Burgmann College campus is managed by the College. Residents must hold a valid Burgmann Surface Parking Permit to use a parking bay. All residents will be emailed information regarding how to apply for this permit. All other parking on the ANU campus is managed by ANU.

### [Parking options on Acton campus - ANU](#)

Bikes/scooters are not allowed inside any College buildings or Village exterior walkways. A secure bicycle compound is available to store residents' bikes and exterior general bike storage areas are situated to the side of the Common Room and in the Village. Residents are responsible for the safety of their own equipment and the College is not liable for any loss.

Please ensure you lock your bike whilst at Burgmann College, including all areas of the ANU campus. **All resident bikes kept on campus need to be registered with Reception and have a coloured, numbered tag under the seat.**

Please contact Reception when you arrive for a bike registration form.

## Security Cameras

Security cameras are installed throughout outdoor and indoor communal areas across the College campus for safety purposes. While the cameras are not monitored in real time, footage is recorded and may be reviewed by Burgmann College to investigate any on-site incidents.

## Storage

Burgmann College does not supply any onsite storage for residents during the semester or summer break. Canberra offers a range of external companies that provide temporary storage options.







## Meet our Staff

*Staff are deeply committed to fostering a welcoming, family - like atmosphere, where every resident feels safe, respected and supported*

## Our Staff

Burgmann College is unique in having staff who live onsite to support residents. The Principal resides in The Lodge, while the Deputy Principal and College Dean live in separate onsite accommodation. During term breaks, a member of the residential staff team is always present to support the College community. If you need assistance, please don't hesitate to contact our Residential Staff or visit Reception.

### Executive

---



**Brenda Holt**  
*Principal*



**Taryn Stasakova**  
*Deputy Principal*



**Monte Nathan**  
*College Dean*



**Nerrida Higgins**  
*Manager Business  
and Finance*



**Cindy Watt**  
*Manager of  
Residential Services*



**Amelia Zeraftis**  
*Director of  
Advancement*

### Administration

---



**Maria Daly**  
*Deputy Manager of  
Residential Services*



**Ivana Stojanoska**  
*Administration  
Officer (Functions)*



**Josephine Bryan**  
*Administration  
Officer (Admissions)*



## Advancement

---



**Gillian Pereira**  
*Advancement  
Administrator*



**Lindsey Nascimento  
da Silva**  
*Communications  
Officer*



**Fiona Nixon**  
*Advancement  
Volunteer*

## Housekeeping

---



**Janice Ruru**  
*Housekeeping  
Supervisor*



**Lence Razmoska**  
*Housekeeping*



**Simon Daguyen**  
*Housekeeping*



**Raj Thangavel**  
*Housekeeping*



**Sindu  
Balakrishman**  
*Housekeeping*



**Paul Millynn**  
*Housekeeping*



**Dusit Worthaisong**  
*Housekeeping*



**Carloyd Inlubang**  
*Housekeeping*

## Maintenance

---



**Ty Everett**  
*MBSFM Team  
Leader*



**Stuart Rutherford**  
*MBSFM*



**Peter Ryan**  
*MBSFM*





## Helpful Contacts & Maps

*We're here to make your university experience the best it can be*

## Burgmann Support

---

Burgmann Residential Advisors Duty  
Number (After hours):

**6125 6099**

Burgmann Reception Help Line  
(Business hours):

**6125 6100**

Principal:

[principal@burgmann.anu.edu.au](mailto:principal@burgmann.anu.edu.au)

Deputy Principal:

[deputy@burgmann.anu.edu.au](mailto:deputy@burgmann.anu.edu.au)

College Dean:

[dean@burgmann.anu.edu.au](mailto:dean@burgmann.anu.edu.au)

## ANU Support

---

ANU Security (available 24/7):

**6125 2249**

ANU Wellbeing Support Line:

Call **1300 050 327** (24 hr service)

SMS text messaging service: **0488 884 170**

ANU Student Safety & Wellbeing Team:

[student.wellbeing@anu.edu.au](mailto:student.wellbeing@anu.edu.au)

ANU Respectful Relationships (RRU):

[respect@anu.edu.au](mailto:respect@anu.edu.au)

ANU Access & Inclusion:

[access.inclusion@anu.edu.au](mailto:access.inclusion@anu.edu.au)

ANU Counselling (Open 9am – 4.45pm  
every weekday):

**6125 2211**

<https://anu-advocate.symplicity.com/care-report/index.php/pid225711?>

ANU Medical Services - link to page below  
[Medical Services | Australian National University \(anu.edu.au\)](#)

ANUSA ANU Student Association for  
Undergraduate Students:

[sa.admin@anu.edu.au](mailto:sa.admin@anu.edu.au)

ANU Dean of Students:

**6125 4184**

[dean.students@anu.edu.au](mailto:dean.students@anu.edu.au)

## ACT Contacts

---

Australian Federal Police:

**000** for emergencies

**131 444** for non-urgent police assistance

Canberra Community Law:

**6218 7900**

Email - [info@canberracommunitylaw.org.au](mailto:info@canberracommunitylaw.org.au)

Conflict Resolution Services:

**6189 0590**

Website: <https://crs.org.au>

Domestic Violence Hotline:

**1800 RESPECT – 1800 737 732**

(available 24/7) Canberra

Rape Crisis Centre:

**6247 25 25**

(available 7am – 11am daily)

Lifeline:

**13 11 14**

(available 24/7)

QLife:

**1800 184 527**

(3pm – 12 am (every day)

A Gender Agenda:

**02 6162 1924**

ACT Womens health Service:

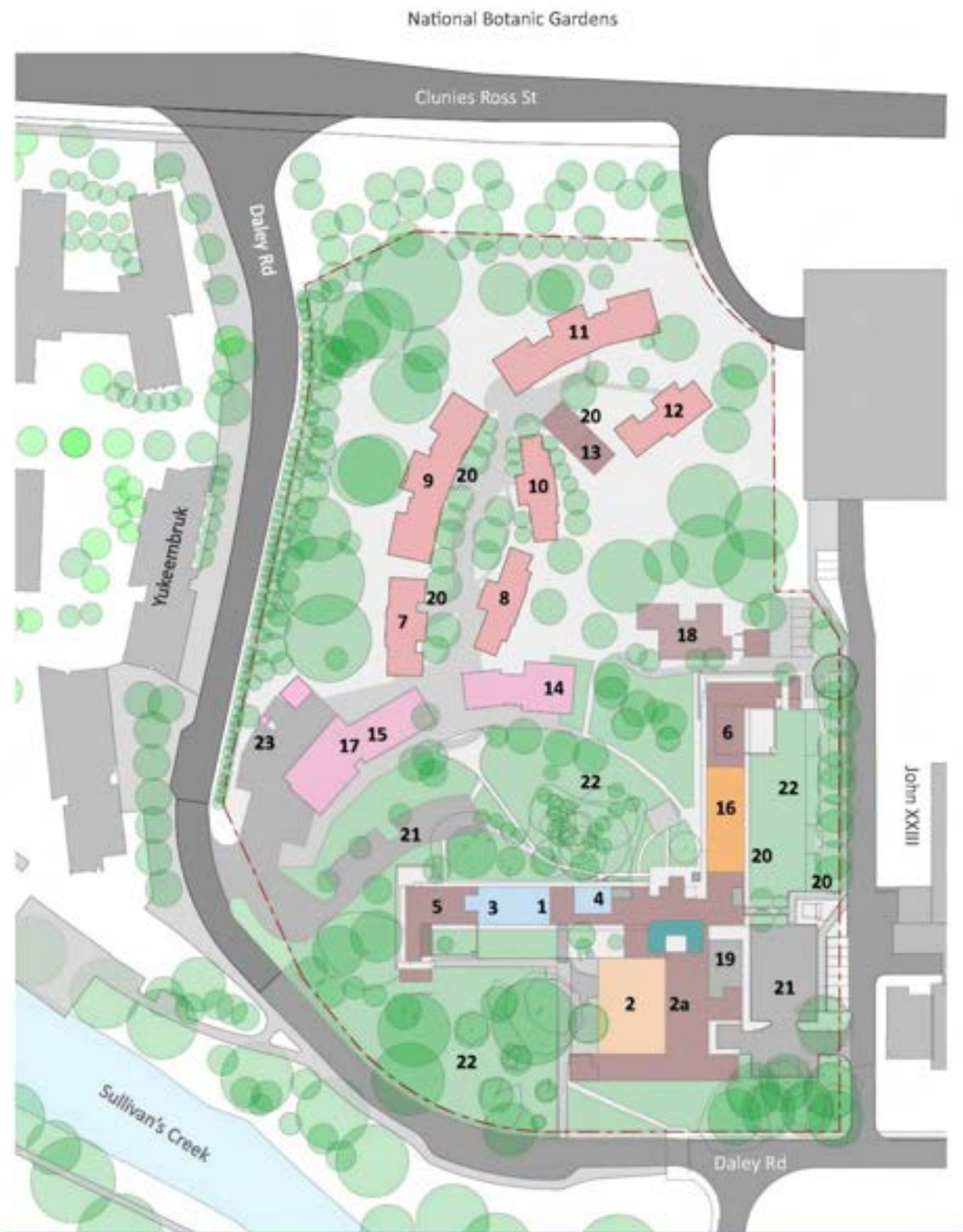
**(02) 5124 1787**

HealthDirect, 24/7 Health advice:

**1800 022 222**



# Burgmann College Site Plan



1. Reception
2. Dining Hall, 2a. Kitchen
3. Principal's Office
4. Deputy & Dean's Office
5. Undergraduate Homer Wing
6. Undergraduate Barassi Wing
7. The Village – A Block
8. The Village – B Block

9. The Village – C Block
10. The Village – D Block
11. The Village – F Block
12. The Village – G Block
13. Village Laundry
14. Chapel
15. Computer Room
16. Common Room

17. Music Room
18. The Lodge (Principal's Residence)
19. Bike Storage - locked
20. Bike Storage - outside
21. Resident Parking – Burgmann Permit
22. Emergency Assembly Areas
23. DOSA (Designated Outside Smoking Area)

## ANU Campus Map



## Canberra Map

